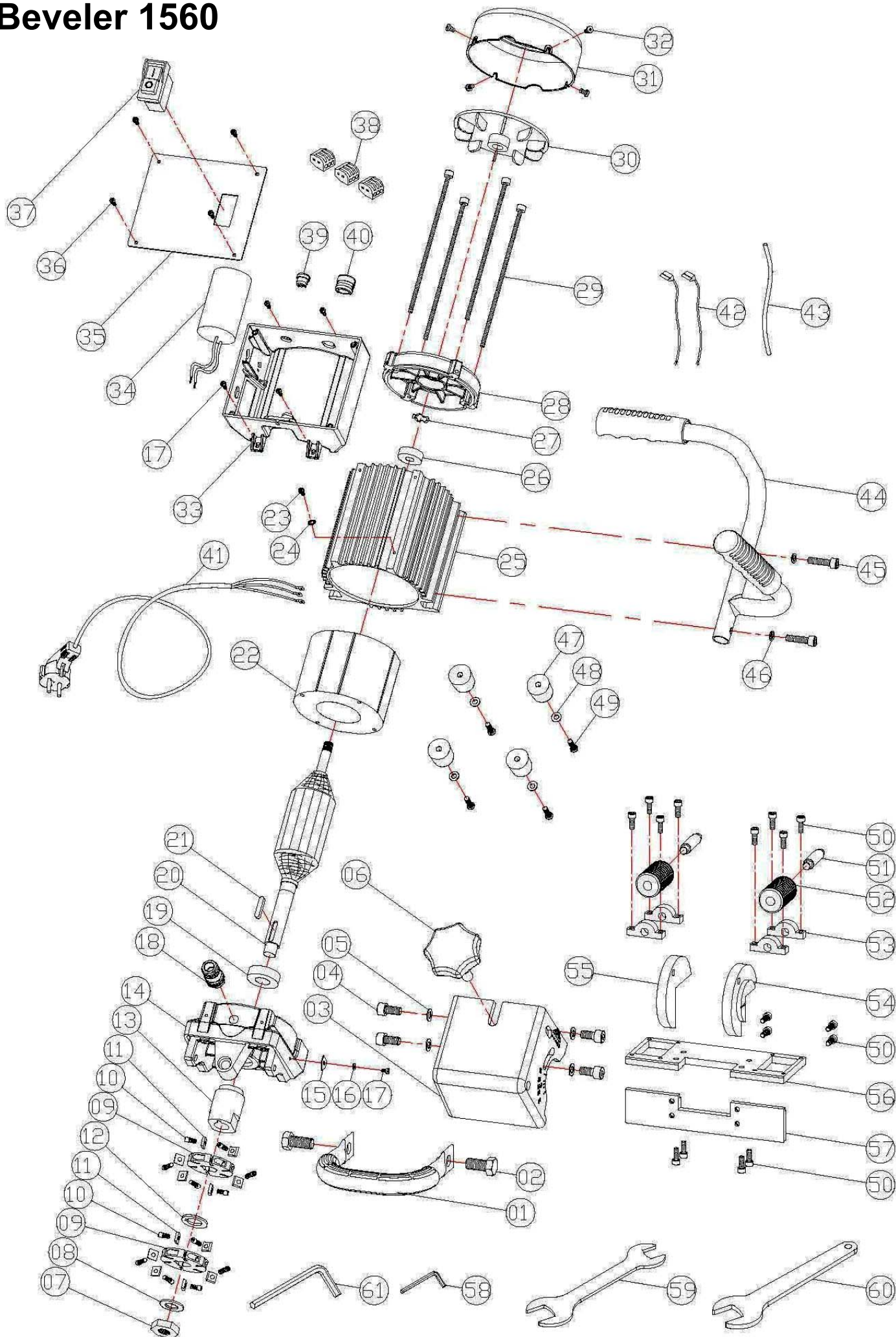


## Beveler 1560



## Beveler 1560

No.	Art. No. Jepson	Parts Name	Discription	QUT.
1.)	MAEBN01	FRONT HANDLE	AM-5000	1
2.)	MAEBN02	SCREW	M14 x 25	4
3.)	MAEBN03	INNER COVER		1
4.)	MAEBN04	SCREW	M10 x 20	4
5.)	MAEBN05	FLAT WASHER	Ø10 x Ø23 x 2	4
6.)	MAEBN06	DEPTH ADJUST NUT		1
7.)	MAEBN07	HEX. NUT	M16 x P2.0	1
8.)	MAEBN08	DISC SPRING	Ø16 x Ø30 x 1.5	1
9.)	MAEBN09	MILLING DISC		2
10.)	MAEBN10	HEADLESS SCREW	M6 x 6	12
11.)	495030	CARBIDE MILLING PLATE	SET	1
12.)	MAEBN12	INTERMEDIATE WASHER	Ø20 x Ø35 x 3.5	1
13.)	MAEBN13	MILLING RECEIVER		1
14.)	MAEBN14	BEARING PLATE		1
15.)	MAEBN15	DEPTH INDICATOR		1
16.)	MAEBN16	FLAT WASHER	Ø4 x Ø10 x 1	1
17.)	MAEBN17	SCREW	M4 x 10	5
18.)	MAEBN18	CABLE GLAND		1
19.)	MAEBN19	BALL BEARING	6004-2RS	1
20.)	MAEBN20	ARMATURE	220 Volt	1
20.)	MAEBN20UK	ARMATURE	110 Volt	1
21.)	MAEBN21	WOODRUFF KEY	6 x 6 x 30	1
22.)	MAEBN22	STATOR	220 Volt	1
22.)	MAEBN22UK	STATOR	110 Volt	1
23.)	MAEBN23	SCREW	M4 x 8	1
24.)	MAEBN24	SUN WASHER	M4	1
25.)	MAEBN25	MOTOR HOUSING		1
26.)	MAEBN26	BALL BEARING	6202 zz	1
27.)	MAEBN27	WAVE WASHER	6202	1
28.)	MAEBN28	MOTOR END CASTING		1
29.)	MAEBN29	SCREW	M5 x 200	4
30.)	MAEBN30	FAN	PM-025	1
31.)	MAEBN31	FAN COVER	PM-025	1
32.)	MAEBN32	SCREW	M5 x 8	4
33.)	MAEBN33	CONTROL BOX	PM-025	1
34.)	MAEBN34	CAPACITOR	400VAC, 20UF 230V	1
35.)	MAEBN35	SWITCH PANEL		1
36.)	MAEBN36	SCREW	M4 x 10	4
37.)	MAEBN37	SWITCH	KJD17-AC230V	1
38.)	MAEBN38	TERMINAL		3
39.)	MAEBN39	CABLE GLAND	SB7R-3	1
40.)	MAEBN40	CABLE GLAND	SB8R-3	1
41.)	MAEBN41	POWER SUPPLY CABLE	1.0 x 3CX2.5M VDE	1
42.)	MAEBN42	WIRE LEAD	10mm 16AWG x 15cm	2
43.)	MAEBN43	WIRE SHEATH	6mm*15cm	1
44.)	MAEBN44	HANDLE		1
45.)	MAEBN45	SCREW	M8 x 40	2
46.)	MAEBN46	SPRING WASHER	M8	2
47.)	MAEBN47	RUBBER FOOT	30L	4
48.)	MAEBN48	FLAT WASHER	Ø6 x Ø13 x 1	4
49.)	MAEBN49	SCREW	M6 x 30	4
50.)	MAEBN50	SCREW	M6 x 16	16
51.)	MAEBN51	ROLLER AXLE		2
52.)	MAEBN52	GUIDING WHEEL		2
53.)	MAEBN52	WHEEL STUB AXLE		4
54.)	MAEBN54	SLEWING SEGMENT (L)		1
55.)	MAEBN55	SLEWING SEGMENT (R)		1
56.)	MAEBN56	HORIZONTAL TABLE PLATE		1
57.)	MAEBN57	VERTICAL TABLE PLATE		1
58.)	MAEBN58	L-WRENCH	M3	1
59.)	MAEBN59	WRENCH	M24 x M27	1
60.)	MAEBN60	WRENCH	M32	1
61.)	MAEBN61	L-WRENCH	M8	1
	MAEBNBOX	Empty Metal-Box		1