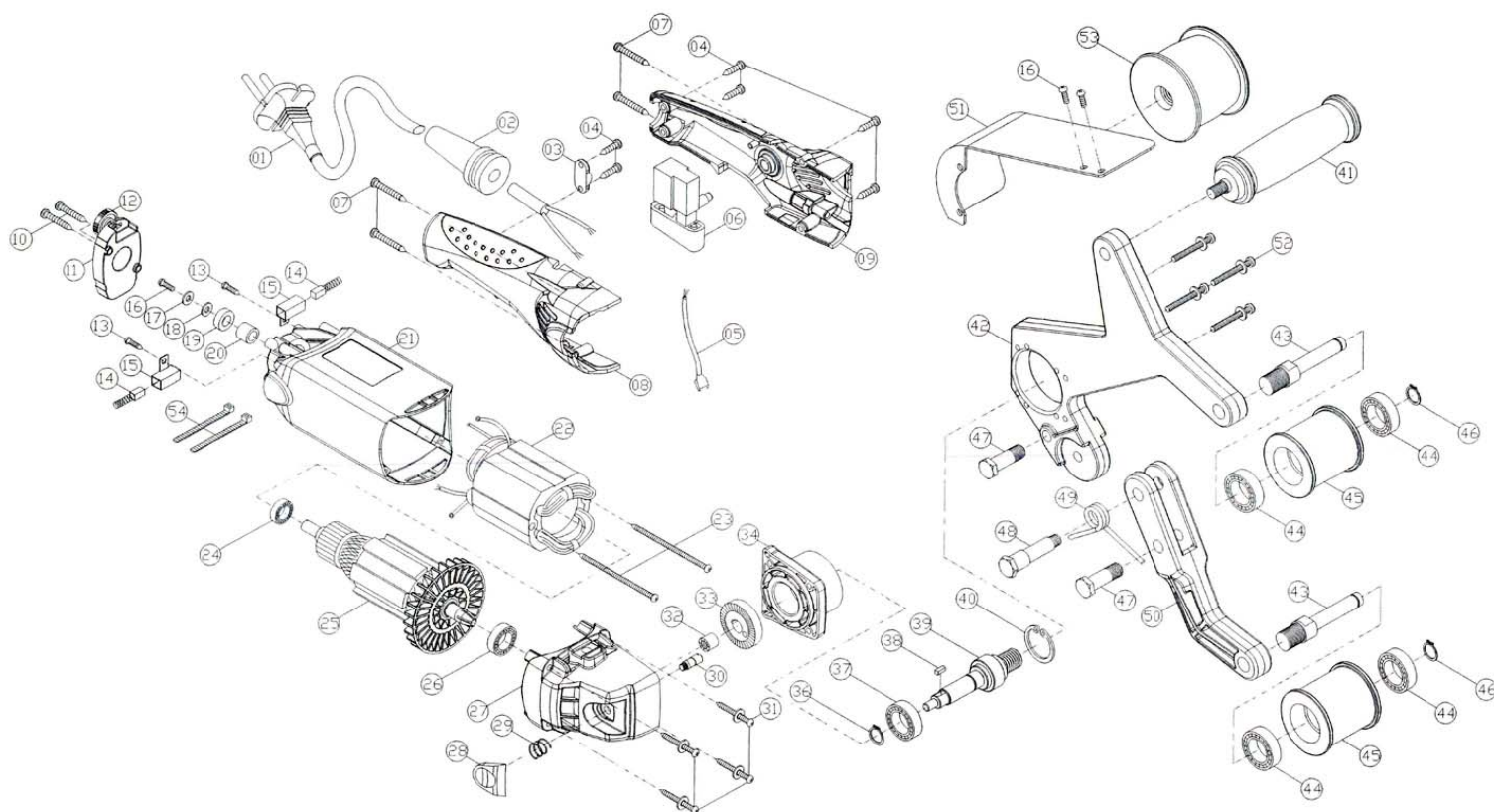


Wraparound Tube Sander/Polisher 760/40



Wraparound Tube Sander/Polisher 760/40

No.	Art. No. Jepson	PARTS NAME		QT'Y
1.)	WS001	POWER SUPPLY CABLE	0.75 x 2C x 3M	1
2.)	WS002	CORD ARMOR		1
3.)	WS003	CABLE CLIP		1
4.)	WS004	SCREW	M4 x 14	6
5.)	WS005	WIRE LEAD		1
6.)	WS006	SWITCH		1
7.)	WS007	SCREW	M4 x 25	4
8.)	WS008	RIGHT HANDLE COVER		1
9.)	WS009	LEFT HANDLE COVER		1
10.)	WS010	SCREW	M4 x 20	2
11.)	WS011	ELECTRONICS UNIT		1
12.)	WS012	THUMB WHEEL		1
13.)	WS013	BRUSH SCREW	M4 x 8	2
14.)	WS014	CARBON BRUSH	(Set 2 Pices)	1
15.)	WS015	CARBON BRUSH HOLDER		2
16.)	WS016	SCREW	M4 x 8	3
17.)	WS017	FLAT WASHER	M4	1
18.)	WS018	PLASTIC WASHER	φ4 x φ11 x 1	1
19.)	WS019	PICKUP MAGNET	φ8 x φ15 x 5	1
20.)	WS020	SPACER	φ8 x φ12 x 10.5	1
21.)	WS021	MOTOR HOUSING	WS 760	1
22.)	WS022	STATOR	220 Volt	1
23.)	WS023	STATOR SCREW	M4 x 60	2
24.)	WS024	BALL BEARING	608-2RS	1
25.)	WS025	ARMATURE 220 Volt	M1.0 6T	1
26.)	WS026	BALL BEARING	6000-2RS	1
27.)	WS027	GEAR CASE		1
28.)	WS028	SPINDLE LOCK BUTTON		1
29.)	WS029	SPRING	φ0.9 x φ10 x 13.5L x 4	1
30.)	WS030	SPINDLE LOCK		1
31.)	WS031	SCREW	M4 x 30	4
32.)	WS032	NEEDLE BEARING	HK0608	1
33.)	WS033	BEVEL GEAR	M1.0 46T	1
34.)	WS034	GEAR PLATE		1
36.)	WS036	EXTERNAL CIRCLIP	S-12	1
37.)	WS037	BALL BEARING	6001-2RS	1
38.)	WS038	PARALLEL KEY	4 x 4 x 8	1
39.)	WS039	SPINDLE		1
40.)	WS040	INTERNAL CIRCLIP	R-28	1
41.)	WS041	FRONT HANDLE		1
42.)	WS042	IDLER ARM		1
43.)	WS043	AXLE	16*17	2
44.)	WS044	BALL BEARING	6200-2RS	4
45.)	WS045	PULLEY		2
46.)	WS046	EXTERNAL CIRCLIP	S-10	2
47.)	WS047	BOLT	M10 x P1.5 x 12	2
48.)	WS048	PIVOT BOLT	M8 x P1.25 x 7.7	1
49.)	WS049	HAIRPIN SPRING	φ2.8 x φ14.5 x 4	1
50.)	WS050	TENSIONER ARM		1
51.)	WS051	GUARD		1
52.)	WS052	SCREW	M4 x 25	4
53.)	WS053	DRIVE PULLEY		1
54.)	WS054	Strap	2.4 x 80mm	2