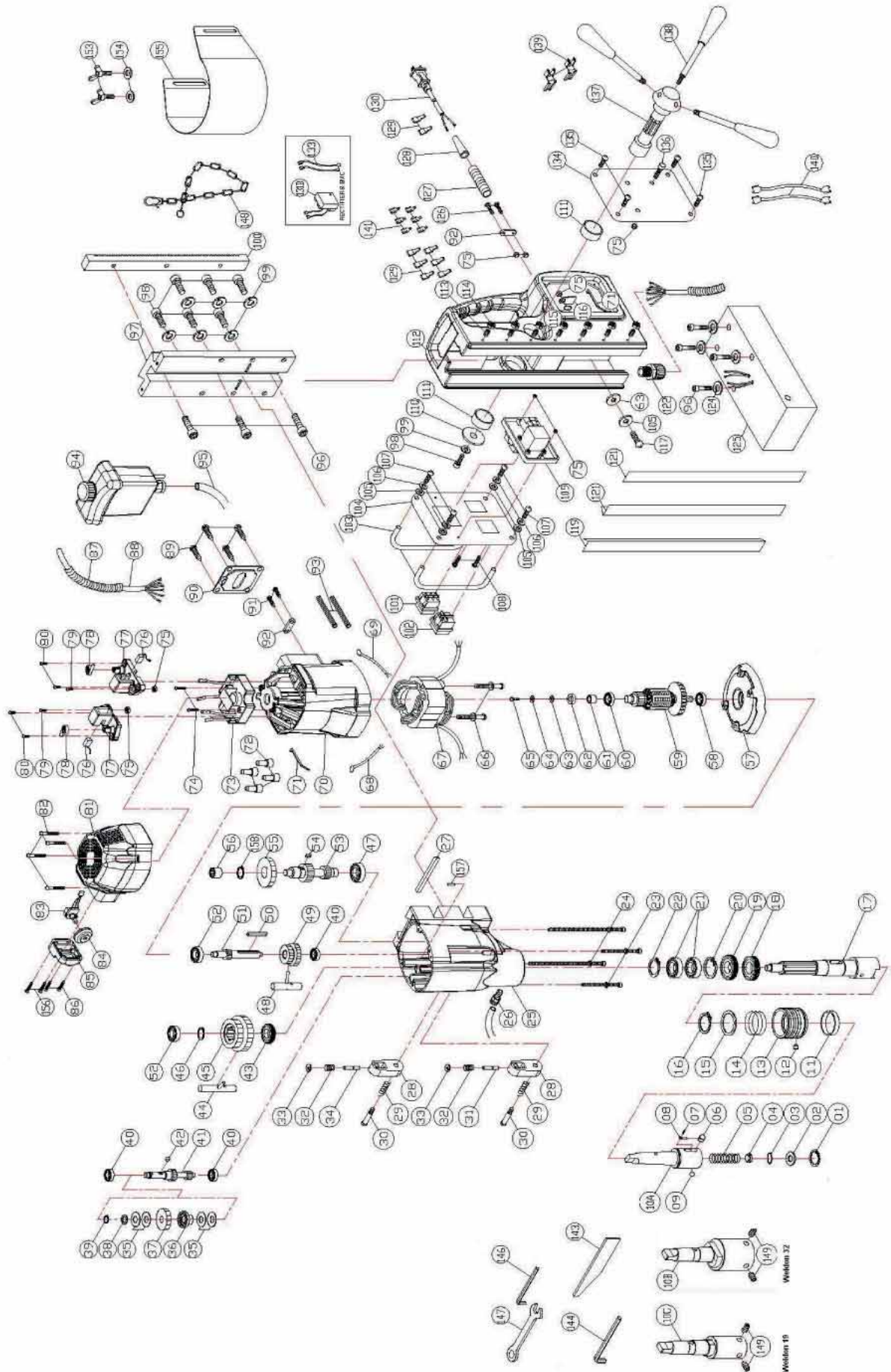


MAGPRO 120/4s



MAGPRO 120/4s

| NO | PART NO | PARTS NAME | | Q'TY used |
|-------|------------|---------------------------------|-----------------------------------|-----------|
| 1.) | MA100001 | INTERNAL CIRCLIP | R-19 | 1 |
| 2.) | MA100002 | ARBOR WASHER | φ10 x φ18.5 x 0.8 | 1 |
| 3.) | MA100003 | O-RING | 12 x 4 | 1 |
| 4.) | MA100004 | COOLANT SEAL | φ12 x φ10.2 x 15 | 1 |
| 5.) | MA100005 | SPRING | φ1.2 x φ10.1 x φ12.5 x 15T x 100L | 1 |
| 6.) | MA100006 | LOCK PIN | 12.3mm | 1 |
| 7.) | MA100007 | SCREW | M3 x 4 | 1 |
| 8.) | MA100008 | LOCKING PIN SPRING | | 1 |
| 9.) | MA100009 | CHECK BALL | φ8 | 1 |
| 10A.) | MA100010A | 3/4" QUICK-RELEASE ARBOR-MT3 | MT3 | 1 |
| 10B.) | MA100010B | 1-1/4" CUTTER ARBOR-MT3 | 31.7mm Weldon 32 | 1 |
| 10C.) | MA100010C | 3/4" CUTTER ARBOR-MT3(OPTIONAL) | 19MM Weldon 19 | 1 |
| 11.) | MA100011 | RUBBER RING Black | φ40 x φ44 x 9 | 1 |
| 12.) | MA100012 | COLLAR PIN | | 1 |
| 13.) | MA100013 | QUICK-RELEASE COLLAR | | 1 |
| 14.) | MA100014 | SPRING | φ2 x φ39 x φ43 x 3T x 30L | 1 |
| 15.) | MA100015 | SPRING SEAT RING | φ35.1 x φ44.5 x 2 | 1 |
| 16.) | MA100016 | EXTERNAL CIRCLIP | S-35 | 1 |
| 17.) | MA100017 | SPINDLE | | 1 |
| 18.) | MA100018 | OIL SEAL | φ40 x φ58 x 8 | 1 |
| 19.) | MA100019 | OIL SEAL | φ40 x φ55 x 7 | 1 |
| 20.) | MA100020 | INTERNAL CIRCLIP | R-55 | 1 |
| 21.) | MA100021 | BALL BEARING | 6006-LLB NTN | 2 |
| 22.) | MA100022 | EXTERNAL CIRCLIP | S-30 | 1 |
| 23.) | MA100023 | SCREW | M5 x 80 | 2 |
| 24.) | MA100024 | SCREW | M5 x 150 | 2 |
| 25.) | MA100025 | GEAR CASE | | 1 |
| 26.) | MA100026 | PUSH LOCK FITTING | | 1 |
| 27.) | MA100027 | MOUNTING TENON | M4 x 4 x 60 | 1 |
| 28.) | MA100028 | SELECTOR TAB | | 2 |
| 29.) | MA100029 | SPRING | φ1 x φ9 x φ11 x 4T | 2 |
| 30.) | MA100030 | SHOULDER SCREW | MD 750 | 2 |
| 31.) | MA100031 | DETENT PIN | MD 100 | 1 |
| 32.) | MA100032 | SPRING | φ0.6 x φ5.3 x φ6.5 x 5T x 17L | 2 |
| 33.) | MA100033 | E-CLIP | E-3 | 2 |
| 34.) | MA100034 | DETENT PIN | MD 750 | 1 |
| 35.) | MA100035 | DISC SPRING | φ12.4 x φ27.9 | 4 |
| 36.) | MA100036 | TOOTH CLUTCH | | 1 |
| 37.) | MA100037 | CLUTCH GEAR | | 1 |
| 38.) | MA100038 | THRUST WASHER | φ12.1 x φ18 x 1.6 | 1 |
| 39.) | MA100039 | EXTERNAL CIRCLIP | E-10 | 1 |
| 40.) | MA100040 | BALL BEARING | 608 zz | 3 |
| 41.) | MA100041 | INPUT PINION | M1.25 x 15T & 10T | 1 |
| 42.) | MA100042 | PARALLEL KEY | M5 x 5 x 10 | 1 |
| 43.) | MA100043 | OIL SEAL | φ28 x φ38 x 7 | 1 |
| 44.) | MA100044 | FIRST SELECTOR FORK | | 1 |
| 45.) | MA100045 | SPINDLE GEAR | M1.75 x 27T M2.0 x 29T | 1 |
| 46.) | MA100046 | INTERNAL CIRCLIP | S-25 | 1 |
| 47.) | MA100047 | BALL BEARING | 6202 zz | 1 |
| 48.) | MA100048 | SECOND SELECTOR FORK | | 1 |
| 49.) | MA100049 | INTERMEDIATE GEAR | M1.25 x 27T & 32T | 1 |
| 50.) | MA100050 | PARALLEL KEY | 5 x 5 x 45 | 1 |
| 51.) | MA100051 | COUNTERSHAFT PINION | 12T | 1 |
| 52.) | MA100052 | BALL BEARING | 6200 zz | 2 |
| 53.) | MA100053 | IDLER PINION | M1.75 x 17T M2.0 x 9T | 1 |
| 54.) | MA100054 | PARALLEL KEY | M5 x 5 x 8 | 1 |
| 55.) | MA100055 | IDLER GEAR | M1.25 x 43T | 1 |
| 56.) | MA100056 | NEEDLE BEARING | TLA 1212 | 1 |
| 57.) | MA100057 | GEAR PLATE | | 1 |
| 58.) | MA100058 | BALL BEARING | 6202-2NSE | 1 |
| 59.) | MA100059UK | ARMATURE 110 V | (MD-130) | 1 |
| 59.) | MA100059 | ARMATURE 220 V | (MD-130) | 1 |
| 60.) | MA100060 | BALL BEARING | 6200-LLU | 1 |
| 61.) | MA100061 | SPACER | φ8 x φ12 x 10.5 | 1 |
| 62.) | MA100062 | PICKUP MAGNET | φ8 x φ15 x 5 | 1 |
| 63.) | MA100063 | PLASTIC WASHER | φ4 x φ11 x 1 | 2 |
| 64.) | MA100064 | FLAT WASHER | φ4 x φ10 x 1 | 1 |
| 65.) | MA100065 | SCREW | M4 x 10 | 1 |
| 66.) | MA100066 | SCREW | M5 x 60 | 2 |
| 67.) | MA100067UK | STATOR 110 V | | 1 |
| 67.) | MA100067 | STATOR 220 V | | 1 |
| 68.) | MA100068 | WIRE LEADS | 16AWG 26cm M4 | 1 |
| 69.) | MA100069 | WIRE LEADS | 16AWG 30cm M4 | 1 |
| 70.) | MA100070 | MOTOR HOUSING | | 1 |
| 71.) | MA100071 | ZIP TIE | 2.5mmX160mm | 2 |
| 72.) | MA100072 | END SPLICE CONNECTOR | C4 | 5 |
| 73.) | MA100073UK | ELECTRONICS UNIT | 110V | 1 |
| 73.) | MA100073 | ELECTRONICS UNIT | 220V | 1 |
| 74.) | MA100074 | SCREW | M4 x 25 | 2 |
| 75.) | MA100075 | NUT | M4 x 8 | 8 |
| 76.) | MA100076 | CARBON BRUSH | 7 x 17 x 17 | 2 |
| 77.) | MA100077 | BRUSH HOLDER | 7 x 17 | 2 |
| 78.) | MA100078 | BRUSH SPRING | | 2 |
| 79.) | MA100079 | SCREW | M4 x 10 | 2 |
| 80.) | MA100080 | SCREW | M4 x 12 | 4 |

MAGPRO 120/4s

| | | | | |
|--------|------------|---------------------------|--------------------------|----|
| 81.) | MA100081 | MOTOR TAIL COVER | | 1 |
| 82.) | MA100082 | SCREW | M4 x 30 | 4 |
| 83.) | MA100083 | RHEOSTAT | | 1 |
| 84.) | MA100084 | THUMB WHEEL | | 1 |
| 85.) | MA100085 | SPEED ADJUSTOR COVER | | 1 |
| 86.) | MA100086 | FLAT HEAD SCREW | M4 x 16 | 2 |
| 87.) | MA100087 | CABLE PROTECTOR | 65cm | 1 |
| 88.) | MA100088 | MOTOR CABLE | 90cm | 1 |
| 89.) | MA100089 | SCREW | M5 x 12 | 4 |
| 90.) | MA100090 | COVER PLATE | | 1 |
| 91.) | MA100091 | SCREW | M4 x 16 | 2 |
| 92.) | MA100092 | CORD CLIP | (LY-115) | 2 |
| 93.) | MA100093 | CABLE SHEATH | M4 x 12CM | 2 |
| 94.) | MA100094 | COOLANT TANK ASSEMBLY | | 1 |
| 95.) | MA100095 | COOLANT TUBE | 40cm | 1 |
| 96.) | MA100096 | SOCKET CAP BOLT | M8 x 20 | 7 |
| 97.) | MA100097 | SLIDE | | 1 |
| 98.) | MA100098 | SOCKET CAP BOLT | M8 x 16 | 7 |
| 99.) | MA100099 | SPRING WASHER | M8 | 7 |
| 100.) | MA100100 | GEAR RACK | 270cm | 1 |
| 101.) | MA100101 | REVERSING SWITCH | | 1 |
| 102.) | MA100102 | MAGNET SWITCH | | 1 |
| 103.) | MA100103 | GUARD BAR | | 2 |
| 104.) | MA100104 | SWITCH PANEL | | 1 |
| 105.) | MA100105 | FLAT WASHER | ψ4 x ψ10 x 1 | 5 |
| 106.) | MA100106 | SPRING WASHER | M4 | 4 |
| 107.) | MA100107 | SOCKET CAP BOLT | M4 x 16 | 4 |
| 108.) | MA100108 | SCREW | M4 x 20 | 2 |
| 109.) | MA100109UK | MOTOR SWITCH | 110 V | 1 |
| 109.) | MA100109 | MOTOR SWITCH | 220 V | 1 |
| 110.) | MA100110 | FLAT WASHER | ψ8 x ψ40 x 2.5 | 1 |
| 111.) | MA100111 | CRANK BUSHING | ψ32 x ψ38 x 12 | 2 |
| 112.) | MA100112 | STAND BODY | | 1 |
| 113.) | MA100113 | SET SCREW | M5 x 35 | 7 |
| 114.) | MA100114 | NUT | M5 | 7 |
| 115.) | MA100115 | STAR WASHER | M5 | 1 |
| 116.) | MA100116 | EARTHING MARKING | | 1 |
| 117.) | MA100117 | SCREW | M4 x 16 | 1 |
| 119.) | MA100119 | GIB STRIP-LEFT | 394mm | 1 |
| 120.) | MA100120 | GIB STRIP-RIGHT | 394mm | 1 |
| 121.) | MA100121 | GIB STRIP TENSIONER | 394 x 15 x 1.5 | 1 |
| 122.) | MA100122 | CABLE GLAND | | 1 |
| 124.) | MA100124 | SPRING WASHER | M6 | 4 |
| 125.) | MA100125 | MAGNET BASE | | 1 |
| 126.) | MA100126 | SCREW | M4 x 30 | 2 |
| 127.) | MA100127 | STRAIN RELIEF | 7CM | 1 |
| 128.) | MA100128 | CORD ARMOR | | 1 |
| 129.) | MA100129 | TERMINAL COVER | | 12 |
| 130.) | MA100130 | POWER SUPPLY CABLE | 1.5 x 3C x 3.5M | 1 |
| 131B.) | MA100131 | RECTIFIER & EMC(OPTIONAL) | | 1 |
| 132.) | MA100132 | WIRE LEADS | 16AWG x 18cm x 250 | 2 |
| 133.) | MA100133 | WIRE LEADS(OPTIONAL) | 1015-16#18CM | 2 |
| 134.) | MA100134 | SIDE COVER | | 1 |
| 135.) | MA100135 | SCREW | M4 x 8 | 4 |
| 136.) | MA100136 | SCREW | M4 x 25 | 1 |
| 137.) | MA100137 | CRANK PINION | | 1 |
| 138.) | MA100138 | CRANK HANDLE | | 3 |
| 139.) | MA100139 | 3 WAY CONNECTOR | | 2 |
| 140.) | MA100140 | WIRE LEADS | 16AWG x 9cm x 250 H | 2 |
| 141.) | MA100141 | SPADE TERMINAL | | 10 |
| 142.) | MA100142 | ZIP TIE | | 1 |
| 143.) | MA100143 | DRIFT | | 1 |
| 144.) | MA100144 | L HEX KEY(OPTIONAL) 5mm | M5 | 1 |
| 146.) | MA100146 | L HEX KEY 2.5mm | M2.5 | 1 |
| 147.) | MA100147 | M8 COMBINATION WRENCH | M8 | 1 |
| 148.) | MA100148 | SAFETY CHAIN | | 1 |
| 149.) | MA100149 | SOCKET SET SCREW | M10 x 10 | 2 |
| 153.) | MA100153 | BUTTERFLY BOLT | M6 x 10 | 2 |
| 154.) | MA100154 | FLAT WASHER | ψ6 x ψ13 x 1 | 2 |
| 155.) | MA100155 | CHIP GUARD | | 1 |
| 156.) | MA100156 | FLAT HEAD SCREW | M4 x 20 | 2 |
| 157.) | MA100157 | PIN | ψ5 x 10 | 1 |
| 158.) | MA100158 | INTERNAL CIRCLIP | S-20 | 1 |
| | MA100CASE | CARRY CASE MA100 | Transportkoffer Optional | 1 |